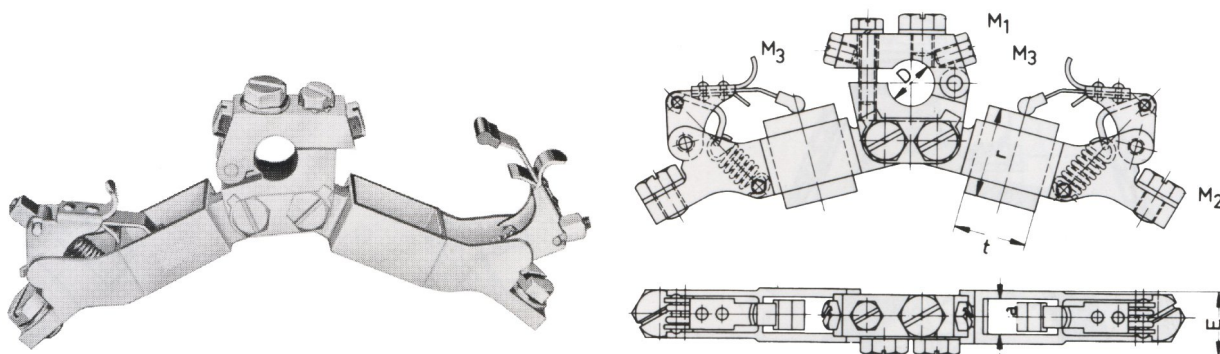


Double clamping slipring brush-holders with tension spring

Heavy duty construction. Brush box brass die-cast, hinged clamping piece in extruded brass.
 For all peripheral speeds.



Order No.	Brush dimensions			Bore		Width E	Terminal		
	t	a	r	D	up to		M1	M2	M3
168GDDO-16	16	8	32	16	20	15	M6	-	M5
208 GDD-16	20	8	32	16	20	15	M6	M6	M5
2010 GDD-16	20	10	32	16	20	16	M6	M6	M5
2010 GDDV-16	20	10	32	16	20	16	M6	M6	M5
2510 GDD-16	25	10	32	16	20	16	M6	M6	M5
2510 GDDV-16	25	10	32	16	20	16	M6	M6	M5
2512 GDD-16	25	12,5	32	16	20	19	M8	M8	M6
2512 GDDOV-16	25	12,5	32	16	20	19	M8	-	M6
2512 GDDV-16	25	12,5	32	16	20	19	M8	M8	M6
2516 GDD-20	25	16	40	20	25	22	M10	M10	M8
3212 GDD-16	32	12,5	32	16	20	19	M8	M8	M6
3216 GDD-20	32	16	40	20	25	22	M10	M10	M8
3216 GDDV-20	32	16	40	20	25	22	M10	M10	M8
3220 GDD-20	32	20	40	20	25	25	M10	M10	M8
4020 GDD-20	40	20	50	20	25	25	M10	M10	M8
4020 GDDV-20	40	20	50	20	25	25	M10	M10	M8
4032 GDDV-20	40	32	50	20	25	38	M10	M10	M8
4032 GDDV-28	40	32	50	28	32	38	M10	M10	M8

Brush-holder types with "V" suffix have an adjustable brush pressure.
 Brush-holder types with "O" suffix are without phase connections M2.

All dimensions are given in mm