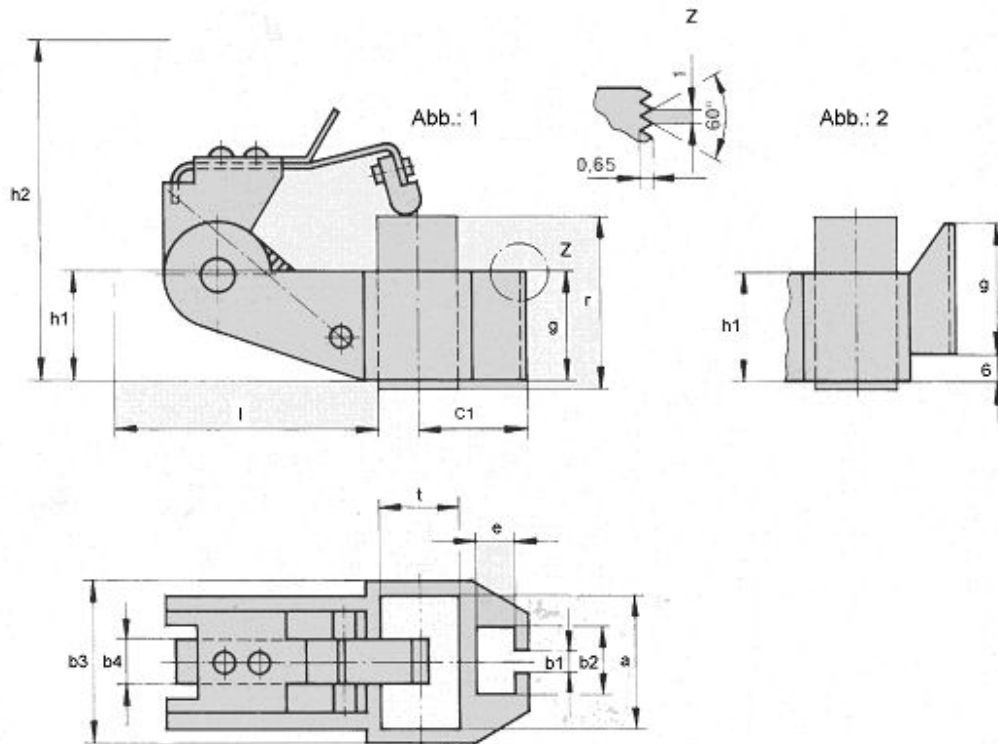


Single brush-holder with tension spring

Heavy duty construction. Made of brass die-cast. For all peripheral speeds.



| Order No. | Brush dimensions t x a x r (mm) | g | C1 | b1 | b2 | b3 | b4 | e | h1 | h2 | l |
|-----------|---------------------------------|----|------|-----|------|------|----|-----|----|------|----|
| B510R | 5x10x20 | 15 | 12,5 | 5,5 | 9,5 | 14,5 | 6 | 4,5 | 15 | 36,5 | 31 |
| B610R | 6,3x10x20 | 15 | 13,2 | 5,5 | 9,5 | 14,5 | 6 | 4,5 | 15 | 37 | 31 |
| B810R | 8x10x20 | 15 | 14 | 5,5 | 9,5 | 14,5 | 6 | 4,5 | 15 | 38,5 | 31 |
| B612R | 6,3x12,5x25 | 20 | 13,2 | 5,5 | 9,5 | 17 | 6 | 4,5 | 20 | 47,5 | 42 |
| B812R | 8x12,5x25 | 20 | 14 | 5,5 | 9,5 | 17 | 6 | 4,5 | 20 | 47 | 42 |
| B1012R | 10x12,5x25 | 20 | 15 | 5,5 | 9,5 | 17 | 6 | 4,5 | 20 | 47 | 43 |
| B816R | 8x16x32 | 22 | 14 | 6,5 | 10,5 | 20,5 | 8 | 5 | 22 | 56 | 38 |
| B1016R | 10x16x32 | 22 | 15 | 6,5 | 10,5 | 20,5 | 8 | 5 | 22 | 56 | 38 |
| B1216R | 12,5x16x32 | 22 | 16,3 | 6,5 | 10,5 | 20,5 | 8 | 5 | 22 | 55 | 38 |
| B620R | 6,3x20x32 | 25 | 13,2 | 6,5 | 10,5 | 24,5 | 8 | 5 | 22 | 56 | 44 |
| B820R | 8x20x32 | 25 | 14 | 6,5 | 10,5 | 24,5 | 8 | 5 | 22 | 56 | 44 |
| B1020R | 10x20x32 | 25 | 15 | 6,5 | 10,5 | 24,5 | 8 | 5 | 22 | 57 | 44 |
| B1220R | 12,5x20x32 | 25 | 16,3 | 6,5 | 10,5 | 24,5 | 8 | 5 | 22 | 60 | 44 |
| B1620R | 16x20x32 | 25 | 18 | 6,5 | 10,5 | 24,5 | 8 | 5 | 22 | 60 | 44 |
| B825R | 8x25x32 | 29 | 14 | 6,5 | 10,5 | 29,5 | 10 | 5 | 25 | 63 | 52 |
| B1025R | 10x25x40 | 29 | 15 | 6,5 | 10,5 | 29,5 | 10 | 5 | 25 | 63 | 52 |
| B1225R | 12,5x25x40 | 34 | 16,3 | 6,5 | 10,2 | 29,5 | 10 | 5 | 24 | 69 | 55 |
| B1625R | 16x25x40 | 29 | 18 | 6,5 | 10,5 | 29,5 | 10 | 5 | 25 | 69 | 53 |
| B2025R | 20x25x40 | 29 | 20 | 6,5 | 10,5 | 29,5 | 10 | 5 | 25 | 70 | 49 |
| B1232R | 12,5x32x40 | 29 | 16,3 | 6,5 | 10,5 | 37,5 | 12 | 5 | 25 | 60 | 45 |
| B1632R | 16x32x40 | 29 | 18 | 6,5 | 10,5 | 37,5 | 12 | 5 | 25 | 61 | 45 |
| B2032R | 20x32x40 | 29 | 20 | 6,5 | 10,5 | 37,5 | 12 | 5 | 25 | 64 | 45 |
| B2532R | 25x32x45 | 30 | 22,5 | 6,5 | 10,5 | 37 | 10 | 5,2 | 30 | 80 | 70 |

Abb.: 1 – up to B1620R + B1225R

Abb.: 2 - from B825R

All dimensions are given in mm