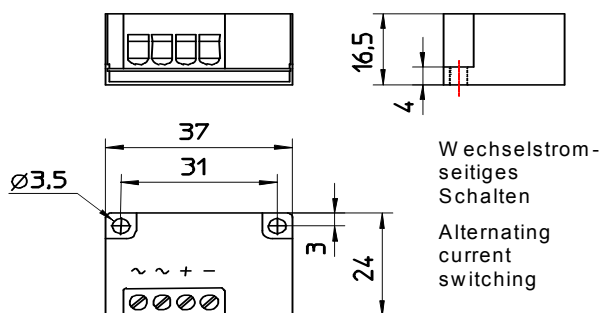


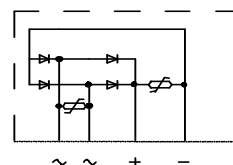
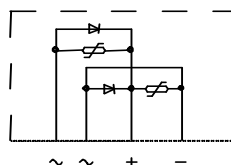
Rectifiers

P1

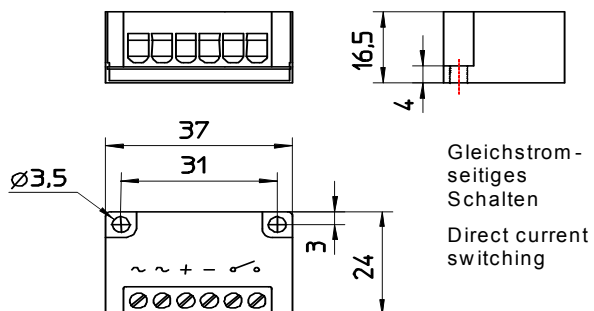


One way-rectifier
 E500/220-1 SiG
 new: PME500

Bridge-rectifier
 B400/350-2 SiG
 new: PMB400

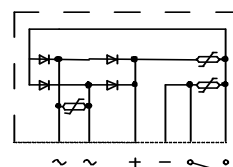
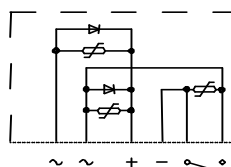


P2



One way-rectifier
 E500/220-1 SiG-S
 new: KSE500/1-S or
 PME500-S

Bridge-rectifier
 B400/350-2 SiG-S
 new: PMB400-S



Connection	Order No.	Fig.	U_{RMS} [V]	U_{dN} [V]	U_{RRM} [V]	I_{dAVM} [A]	I_{FSM} [A]
One-way rectifier	PME500	P1	500 + 7,5 %	$\frac{U_{RMS}}{2,22}$	1800	1	60
One-way rectifier	KSE500/1-S or PME500-S	P2	500 + 7,5 %	$\frac{U_{RMS}}{2,22}$	1800	1	60
One-way rectifier	KSE500/2-S	P2	500 + 7,5 %	$\frac{U_{RMS}}{2,22}$	1800	2	60
Bridge rectifier	PMB400	P1	400 + 5 %	$\frac{U_{RMS}}{1,11}$	1600	2	60
Bridge rectifier	PMB400-S	P2	400 + 5 %	$\frac{U_{RMS}}{1,11}$	1600	2	60

U_{RMS} AC input voltage
 I_{dAVM} DC-output current

U_{dN} DC output voltage
 I_{FSM} Peak one cycle surge forward current

U_{RRM} repetitive peak reverse voltage